
上海汽车集团股份有限公司

2015年度业绩介绍会

另

另

另

关

另

另

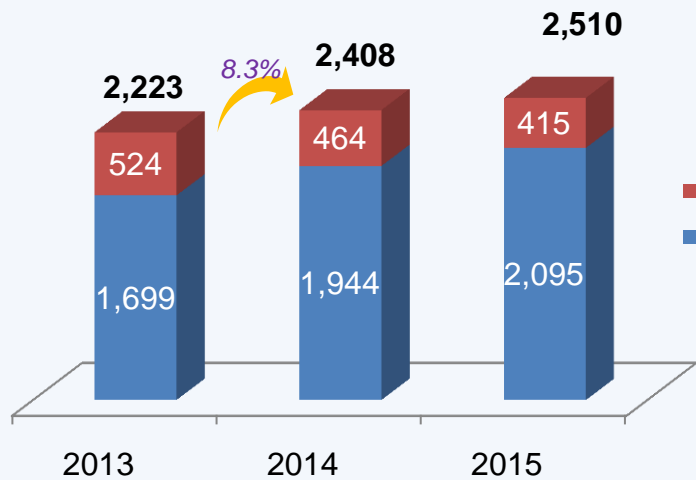
关

第一部分 2015年业绩回顾

业绩情况



关

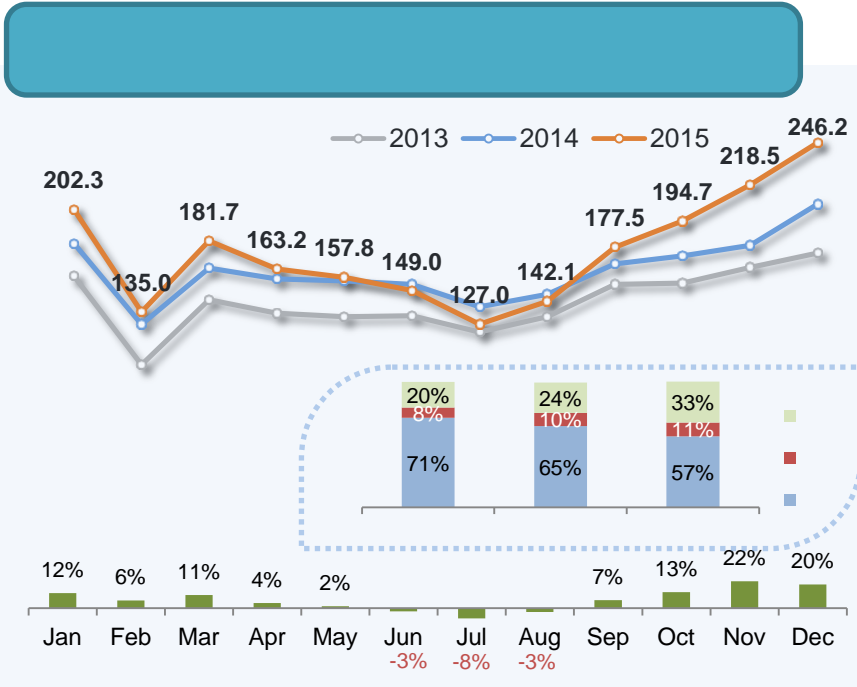


2015

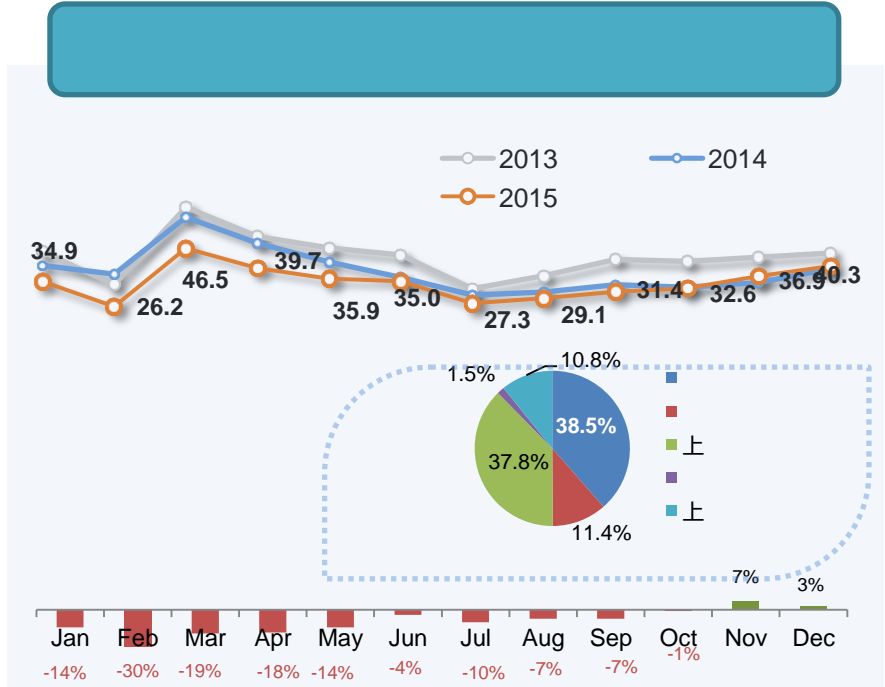
2,510

4.2%

关

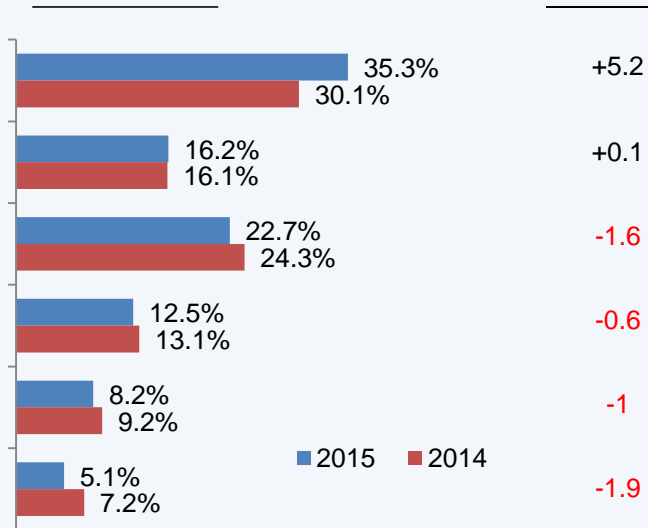


2015 2,095 7.8% SUV
6.6 SUV

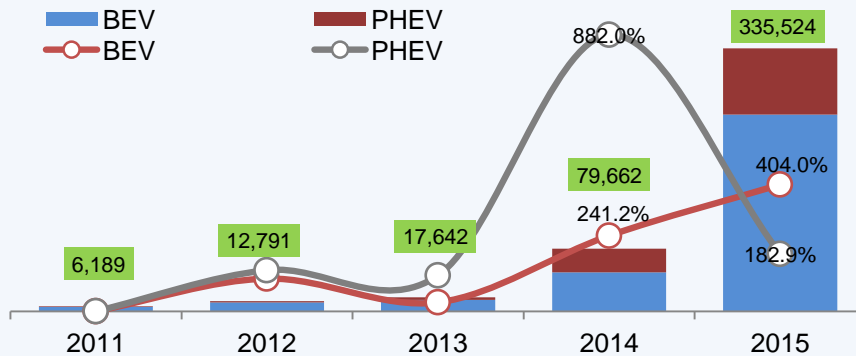


2015 415.3 10.5%

关



2015 SUV
35.3%



BEV	90.1%	88.9%	82.8%	62.6%	74.8%
PHEV	9.9%	11.1%	18.2%	37.4%	25.2%

上

2015 33.5 BEV 404% PHEV
世183%

			"	
		137.0	111.6	22.8%
		356.4	348.5	2.3%
		493.5	460.1	7.3%
		85.8	87.3	-1.7%
		10.9	14.6	-25.3%
		96.7	101.9	-5.1%
		590.2	562.0	5.0%

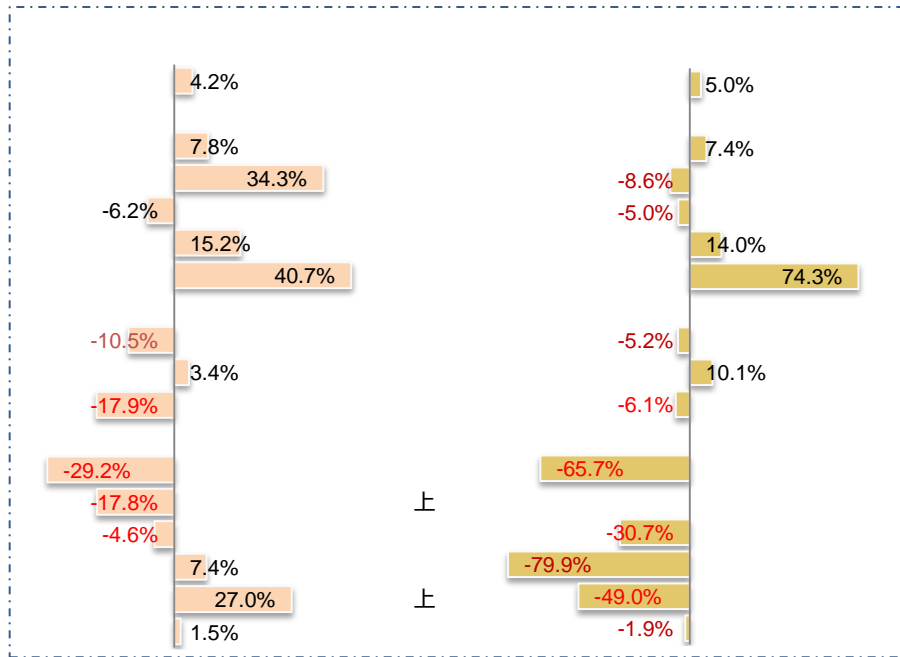
2015	590.2	5%
------	-------	----

*

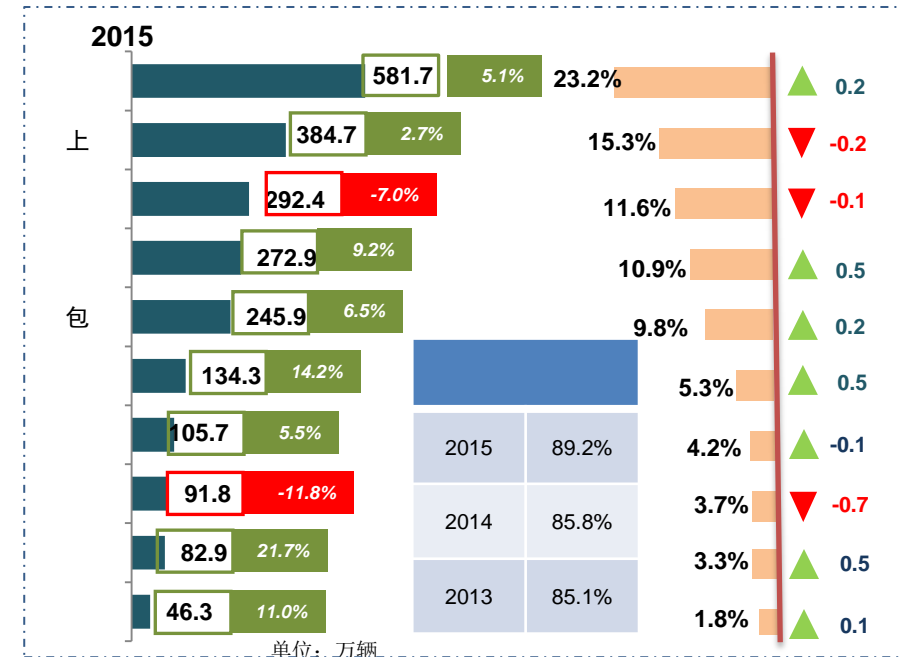
MG

G10

关



➤ 2015 SUV 世74.3%



➤ 2015 0.2 23.2%

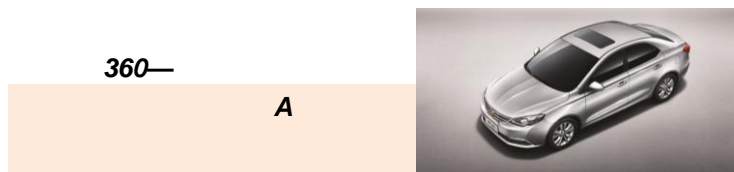
89.2%

单位: 万辆

	2014	2015	
*	180,018	170,017	-5.6 %
	21,012	35,053	66.8%



NetGreen 上 NetBlue



➤ MG 5000

➤ 360/350 10000
360"

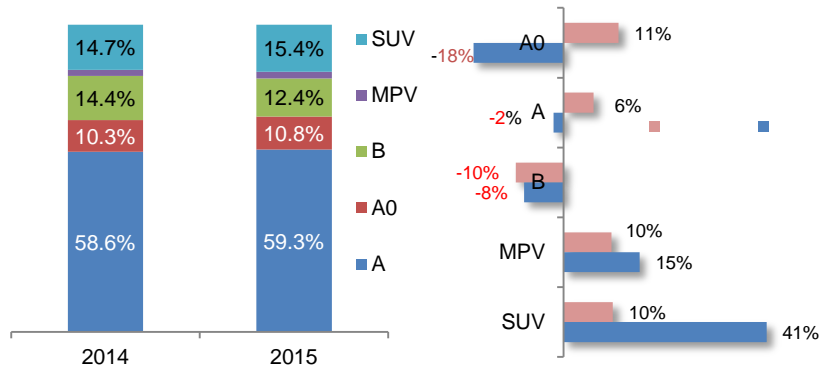


世

37 /



2014-2015



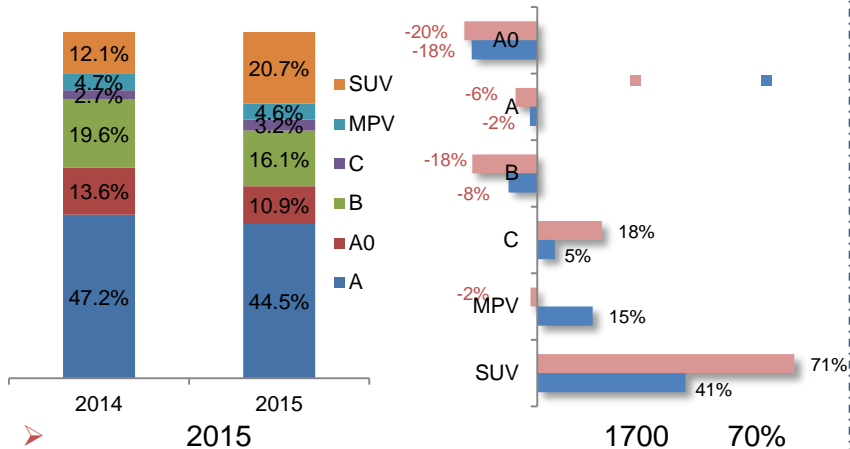
5 24



2014	1,442,616	282,390	1,725,006
2015	1,532,009	280,068	1,812,077
	+6.2%	-0.8%	+ 5.0%



2014-2015



CHEVROLET



2014	767,140	919,518	73,500	1,760,158
2015	636,635	1,035,373	80,007	1,752,015
	-17.0%	+8.9%	+12.6%	-0.5%

1700 70%
 SUV
 3 世 2 10
 上

世



2014	1,624,264	181,586	1,805,850
2015	1,537,135	502,872	2,040,007
	-5.4%	+ 176.9%	+13.0%

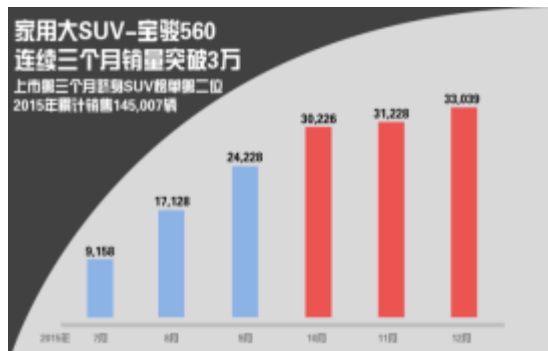
2015	上	上	
560	730		世上
	200		
		730	560
	2		

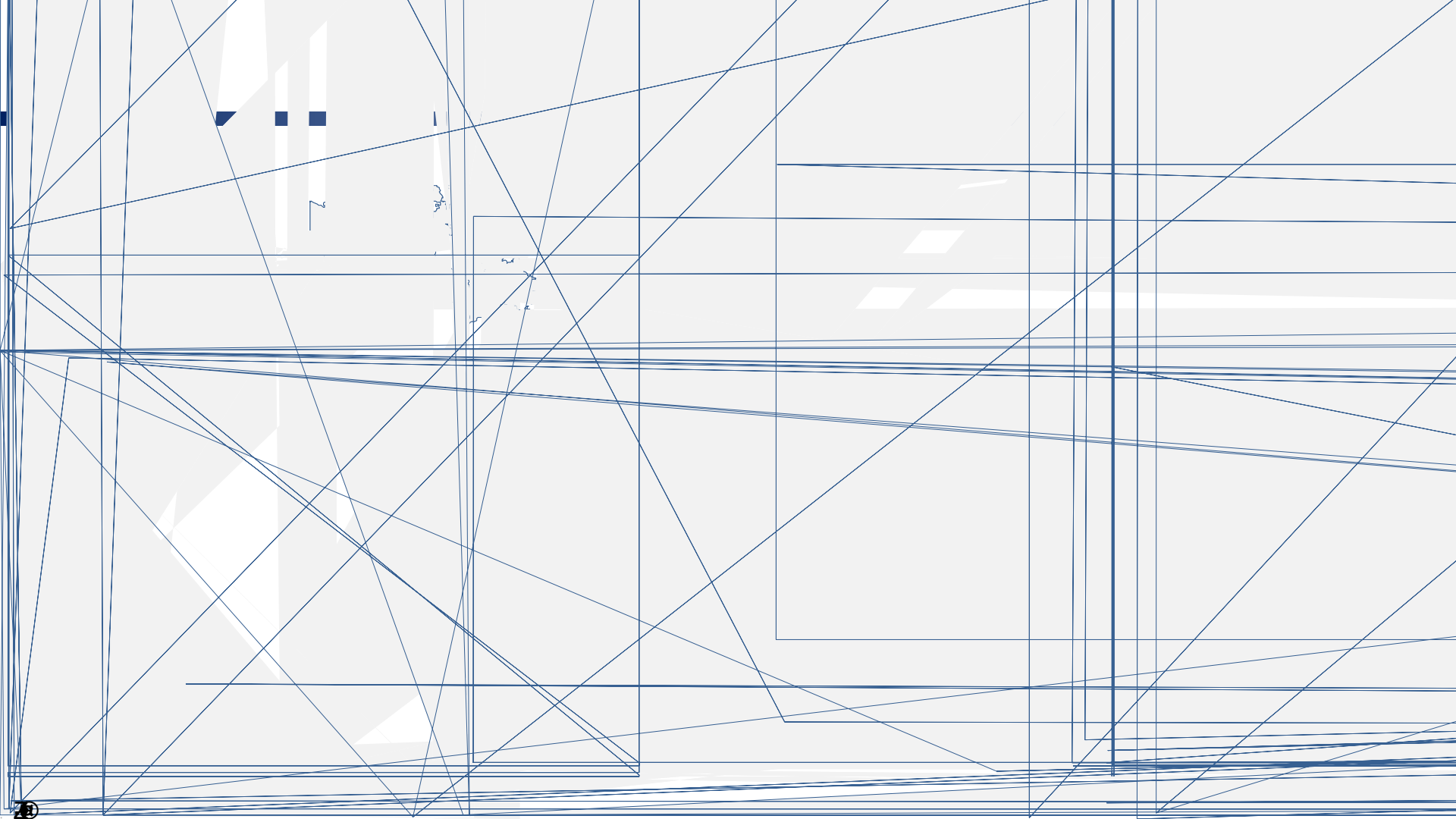


2014	1985	世上
------	------	----



2010	2015
560	730
	50.3







世



PPM

95%



上
APP



上

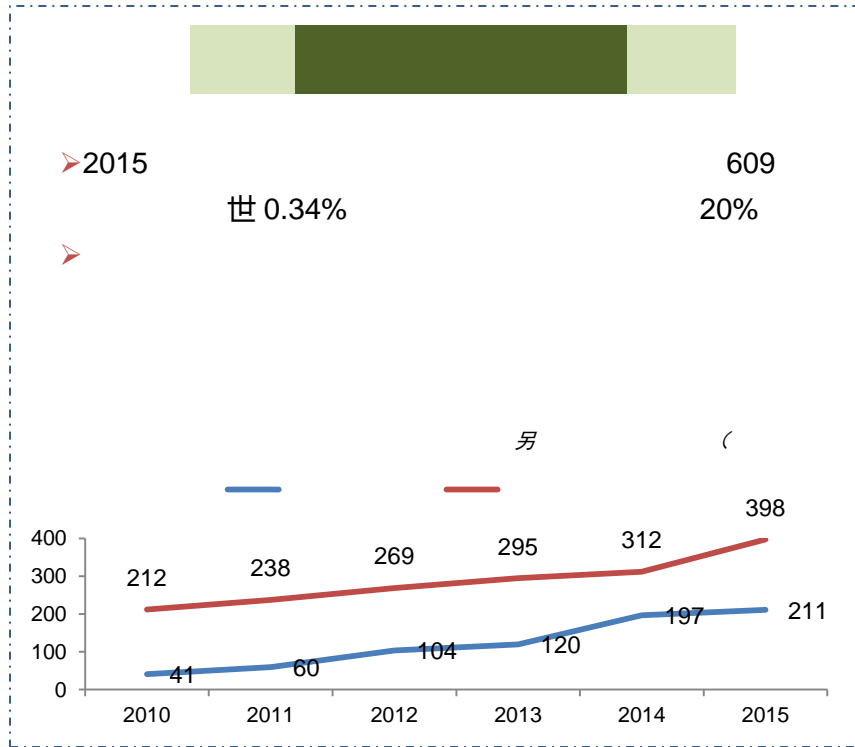
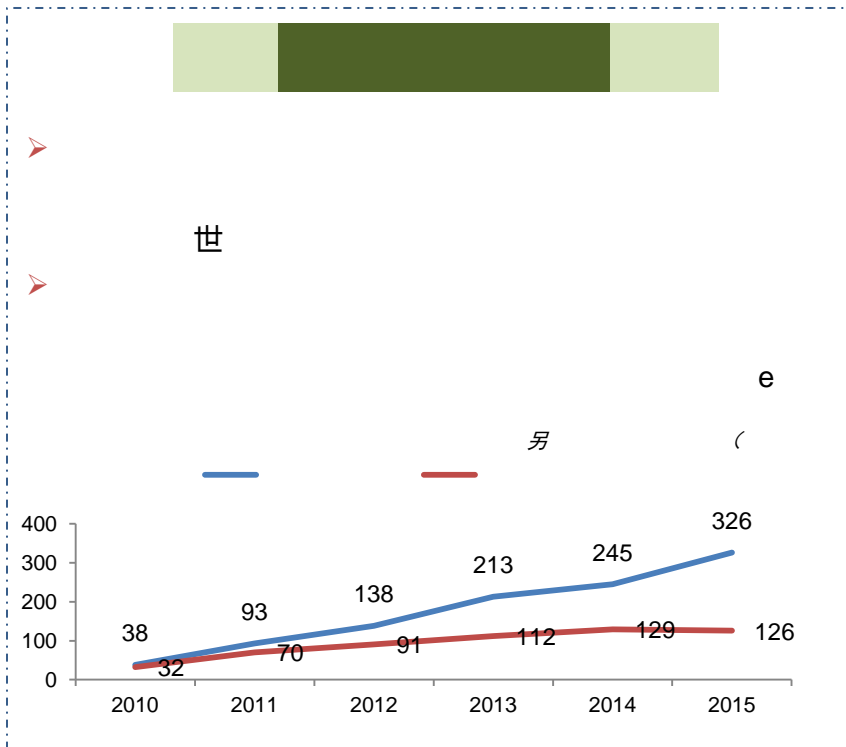


4886.67

上

55







(

另

(

任

(



2015

3

1.1



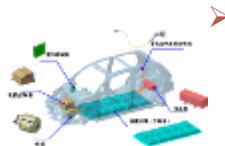
EV80

12

10.5

1000

2016



1.4
iGS

2015 11 上





200

2020

50

1



e

30

200



世



e

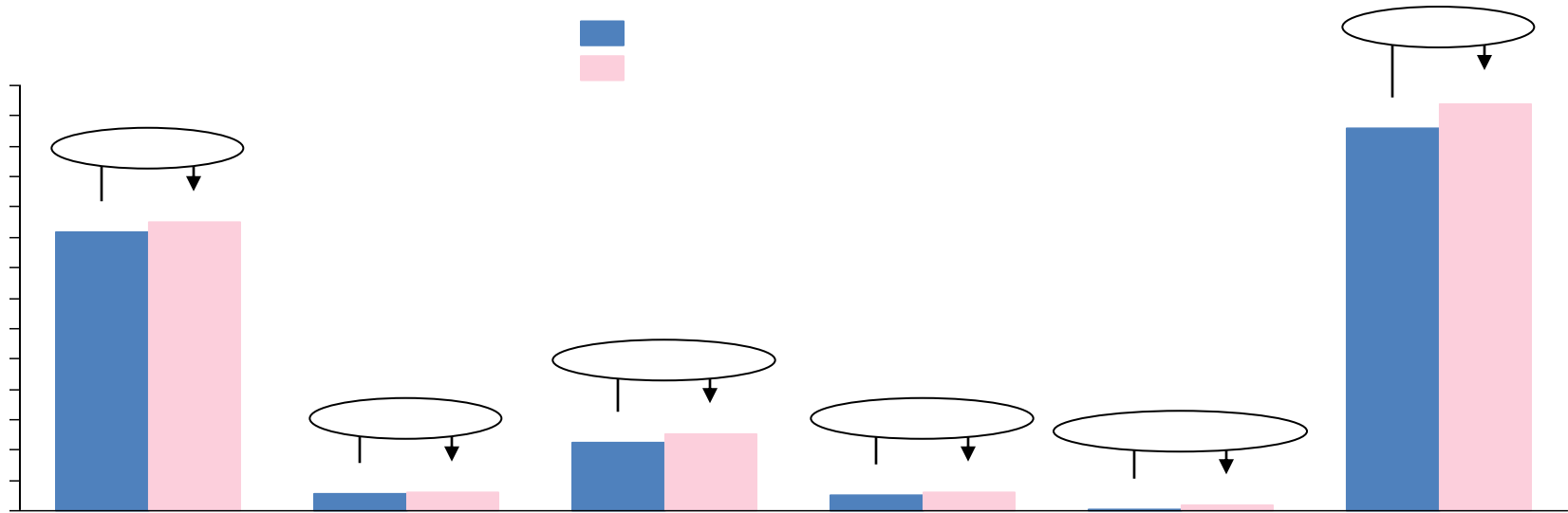
财务情况

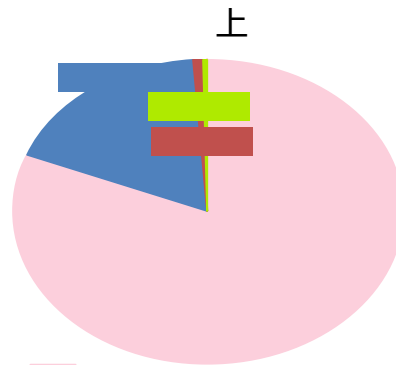
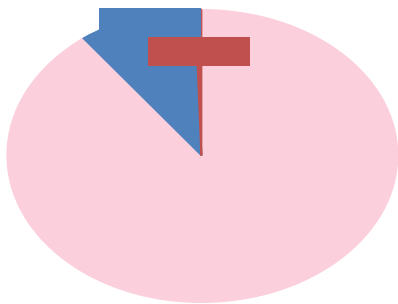
The background of the slide features a blue-tinted collage of financial and business-related imagery. On the left, there are circular gauges and dials, similar to those found in a car's instrument cluster. In the center and right, there are 3D bar charts and graphs, suggesting data analysis and financial performance. The overall aesthetic is professional and modern, with a focus on data visualization.



	上	
	上	
	上	
		上

[Dark Blue Block]	上 上 上	[Light Blue Block]
[Dark Blue Block]	[Pink Block]	[White Block]





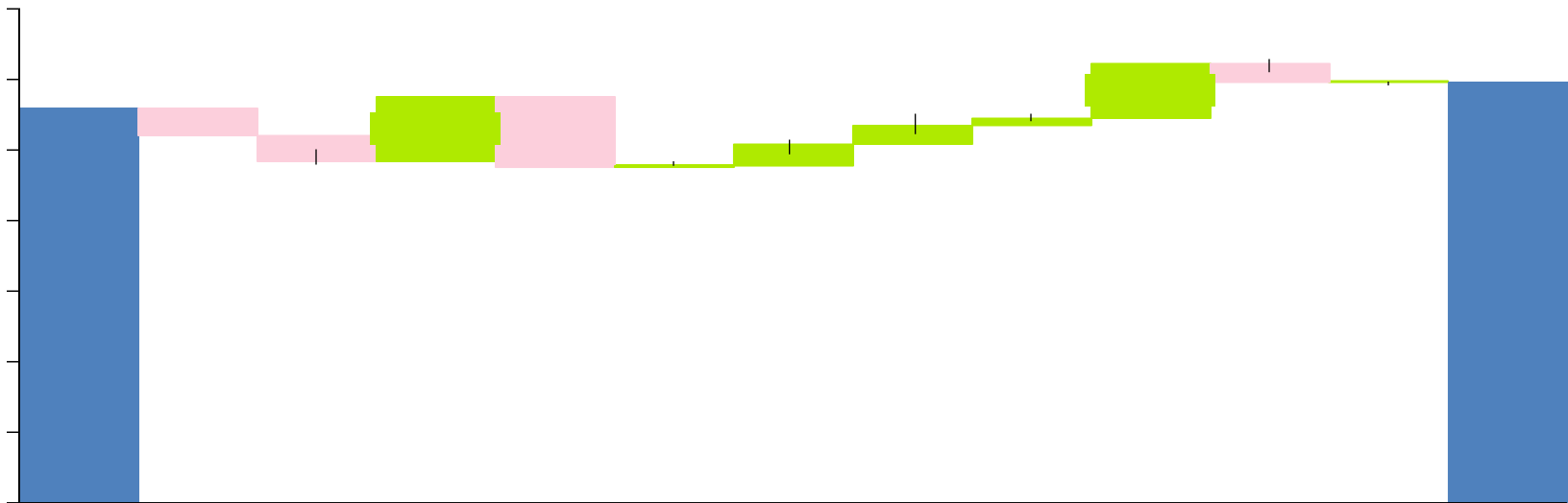
	单位: 万元
	2,663,128
	284,892
	18,293
	2,966,313

世

世

	单位: 万元
	2,157,953
	477,101
	17,124
	10,950
	2,663,128

上



世



[Dark Blue Header Bar]				
_____	_____	_____	_____	_____
[Light Blue Footer Bar]				

[Dark Blue Header Bar]				
_____	_____	_____	_____	_____
[Light Blue Footer Bar]				

第二部分 2016年市场预测

关



1.6

	2015	2016	%
	2095	2220	6.0%
	415	400	-3.6%
	2510	2620	4.4%



另

1

上

2

世

;

3

;

4

;

5

。

上海汽车集团股份有限公司

2015年度业绩介绍会